

**Please click on the links below for further news and useful information**

Website Home Page	<a href="#">Avalon School Home Page</a>
Latest News & Stories	<a href="#">Latest News</a> <a href="#">Weekly Newsletters</a>
Parents' Area	Letters to Parents/Carers - <a href="#">Letter &amp; Documents</a> Term Dates 2021/22 & 2022-2023 - <a href="#">Term Dates</a>
COVID 19	Updates & information sharing <a href="#">COVID-19</a>
Calendar Dates	<a href="#">Calendar Dates</a>
Before & After School	<a href="#">Fun Activities</a>
PTA News	<a href="#">PTA News &amp; Event</a>

### CELEBRATING ACHIEVEMENTS!



**St Andrew**



**St David**



**St George**



**St Patrick**

#### House Points – This Week

**164**

**150**

**158**

**113**

#### Total House Points for the Year To-date

**2723**

**2423**

**2539**

**2110**

#### Merit Badges

Reception

Year 1

Year 2

Year 3

Year 4

Year 5

Year 6

L M

P B

M L

M W

N P

A M

T B

C R

S McW

S B

#### Achievement Certificates

Reception

Year 1

Year 2

Year 3

Year 4

Year 5

Year 6

C D

O S

S S-S

E P

H R

G F

A R





Year 3 C S

Year 5 J G, E P, J C, N T, C O, H McW, T K

### Mathletics

#### Pupil of the Week!

Mathletics

Reception to Year 2 N P  
Year 3 & Year 4 S G  
Year 5 & Year 6 E W

### Golden Table

Rec	A U	Y1	O S	Y2	R P
Y3	C S	Y4	S C	Y5	L J
		Y6	B B		

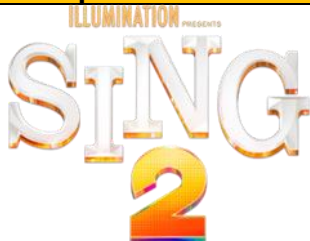
## NEWS, NOTICES & REMINDERS

### Year 3 Class Assembly



Thank you to our Year 3 parents who were able to attend the children's class assembly. We do hope that you enjoyed their performance.

### Reception to Year 2 Visit to the Cinema



The children of Reception, Year 1 and Year 2 had a wonderful time this morning at the cinema when they went to see the film Sing 2. We are sure that they will be telling you all about it and that this will have enriched their follow up work in PSHCE.

### Reception Stay & Play Sessions

Tuesday 15<sup>th</sup>, Wednesday 16<sup>th</sup> & Thursday 17<sup>th</sup> March



We would like to invite you to a "Stay & Play" session during the **week commencing 14<sup>th</sup> March**. You will have the opportunity to stay with your child and join in with learning activities. The Reception staff will also be on hand to discuss progress and answer any questions you may have.

Thank you to those parents who have already booked to attend. Parents/carers must report to the School office to sign in prior to attending the session. For any further enquiries, please contact the school office or your child's teacher.

[Reception Stay & Play Letter](#)

### FACE-TO-FACE Nursery & Pre-School Parents Consultation Meetings

Week Commencing 14<sup>th</sup> March



Meetings will be held in your child's classroom with their key worker. Parents/Carers will receive their child's progress report prior to their parent consultation meeting and have the opportunity to see their child's work.

Appointments can be made from **Friday 4<sup>th</sup> February from 4pm and will close at 4pm today Friday 11<sup>th</sup> March**. Should you wish to make any changes after this date please contact the school office or [annevans@avalon-school.co.uk](mailto:annevans@avalon-school.co.uk)

Please visit <https://avalon.schoolcloud.co.uk/> to book your appointments (A short guide on how to add appointments is included with this letter).

Class	Teacher / Key Worker	Dates & Times Appointments Available
Nursery	Jackie Duffy	Wednesday 16 <sup>th</sup> March from 2.30pm to 5.00pm
	Lucy Hunt	Wednesday 16 <sup>th</sup> March from 2.30pm to 5.00pm
	Mandy Elliott	Thursday 17 <sup>th</sup> March from 2.30pm to 5.00pm
Pre-School	Julie Bache	Monday 14 <sup>th</sup> March from 2.30pm to 5.00pm
	Jo Rice	Tuesday 15 <sup>th</sup> March from 2.30pm to 5.00pm

[Parents Evening Consultation Letter and Guide](#)

### Spring Term Year 3 Art & Design Food/Cookery Lessons



The Year 3 children will be continuing their cookery lessons this week, on Wednesday 16<sup>th</sup> March. The children will be bringing home the dishes they have prepared to share with their family. In order for the children to bring home the food they have prepared, we would be most grateful if parents/carers could provide a tub with a lid.

[Year 3 Food/Cookery Lessons Letter](#)

### Red Nose Day Friday 18<sup>th</sup> March



Red Nose Day 2022 is on Friday 18<sup>th</sup> March, to raise money, we will be having a non-uniform day and ask that one item of clothing to be red or nose related. We will also have lots of other fun activities for the children to join in with throughout the day.

As we would like children to wear something red or red nose related, we would ask for a suggested donation of £2.00 for non-uniform which will go towards the total money raised. Donations should be brought into school in a named envelope and handed to form teachers / key workers. Any class that usually have PE on a Friday should bring their PE kit into school to change into prior to their lesson.

We will again be selling red noses (100% plastic free) from the school office at £1.50 each. Children wishing to purchase a Red Nose should bring their money in a named envelope to the school office.



[Red Nose Day Letter](#)

### Easter Chocolate Hampers Raffle & Easter Egg Chick Sale



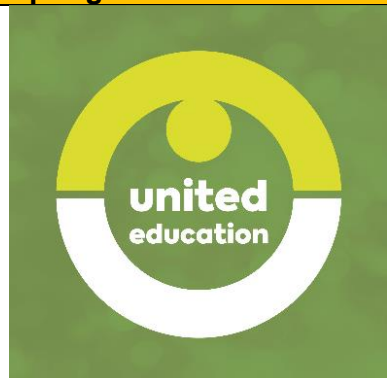
Following our visit from Nathan Young, a talented young deaf swimmer; the School Council have decided that they would like to fundraise to help support Nathan's training as he prepares to compete in Deaflympics in Brazil in 2023.

From Monday 7<sup>th</sup> March the School Council will be selling knitted chicks with a cream egg hidden inside for £2.00 each.

They will also be selling raffle tickets at £1.00 a strip for the chance to win one of two chocolate hampers.

[Nathan Young Fundraiser Letter](#)

### United Education Holiday Club Spring Term – BOOK NOW



We are very excited to announced that in partnership with United Education we will be running a holiday club start this easter break.

The booking system for the easter break is now open, please click on the link below to book a place.

<https://booknow.united-education.co.uk/project/26199>

Enter the code "PUPIL 10" to take advantage of a 10% discount off the daily rate.

### Lunch Menu Next Week



Lunch menu for the week commencing 14<sup>th</sup> March 2022



Click on the following link for our [Lunch Menus](#)

#### Favourite Meal of the Week

Main	Chilli, Rice & Nachos
Pudding	Sticky Toffee Pudding

### Tam O'Shanter Root Vegetable Donation Drop Monday 21<sup>st</sup> March



The school council will be visiting Tam O'Shanter Farm on Tuesday 22<sup>nd</sup> March for an education visit. School council would like to support a local charity and have chosen to support Tam O'Shanter Farm and perhaps sponsor an animal. The farm solely relies on volunteer support to enable it to run.

[Root Vegetable Drop Letter](#)

School council will be taking root vegetables to donate to the animals. The farm accepts donations of all root vegetables except sprouts and onions, these donations can be brought into school on Monday 21<sup>st</sup> March only. There will be two drop off points, the school office foyer, and the nursery foyer. We hope you can support our local farm and the animals it cares for.

## FACE-TO-FACE Reception to Year 6 Parents Consultation Meetings

### Week Commencing 21<sup>st</sup> March



Meetings will be held in your child's classroom with their teacher. Parents/Carers will receive their child's progress report prior to their parent consultation meeting and have the opportunity to see their child's work.

Appointments can be made from **Friday 4<sup>th</sup> February from 4pm and close at 4pm on Friday 18<sup>th</sup> March**. Should you wish to make any changes after this date please contact the school office or [annevans@avalon-school.co.uk](mailto:annevans@avalon-school.co.uk) Should you wish to make any changes after this date please contact the school office or [annevans@avalon-school.co.uk](mailto:annevans@avalon-school.co.uk)

Please visit <https://avalon.schoolcloud.co.uk/> to book your appointments (A short guide on how to add appointments is included with this letter).

Class	Teacher / Key Worker	Dates & Times Appointments Available
Reception	Miss Hardy	Tuesday 22 <sup>nd</sup> March from 3.30pm to 5.00pm Wednesday 23 <sup>rd</sup> March from 4.00pm to 6.00pm
Year 1	Mrs Parkins	Tuesday 22 <sup>nd</sup> March from 3.30pm to 5.00pm Wednesday 23 <sup>rd</sup> March from 5.00pm to 6.30pm
Year 2	Mrs Roberts	Tuesday 22 <sup>nd</sup> March from 3.30pm to 5.00pm Wednesday 23 <sup>rd</sup> March from 4.00pm to 6.00pm
Year 3	Mrs Creedon	Tuesday 22 <sup>nd</sup> March from 4.00pm to 5.30pm Wednesday 23 <sup>rd</sup> March from 4.00pm to 6.00pm
Year 4	Miss Robertson	Tuesday 22 <sup>nd</sup> March from 4.00pm to 5.30pm Wednesday 23 <sup>rd</sup> March from 4.00pm to 6.00pm
Year 5	Mr Ashton & Mrs Kililiku	Tuesday 22 <sup>nd</sup> March from 4.00pm to 6.40pm Wednesday 23 <sup>rd</sup> March from 4.00pm to 6.50pm
Year 6	Mrs Kililiku & Mr Ashton	Monday 21 <sup>st</sup> March from 4.00pm to 5.50pm Thursday 24 <sup>th</sup> March from 4.00pm to 5.40pm

[Parents Evening Consultation Letter and Guide](#)

**Nursery & Pre-School Stay & Play Sessions**  
**Tuesday 22<sup>nd</sup>, Wednesday 23<sup>rd</sup> & Thursday 24<sup>th</sup> March**





We would like to invite you to a "Stay & Play" session during the week commencing 21<sup>st</sup> March. You will have the opportunity to stay with your child and join in with learning activities. The Nursery and Pre-School staff will also be on hand to discuss progress and answer any questions you may have.

Stay & Play sessions are available for parents & carers either in the morning or the afternoon; please indicate on the slip attached within the letter, which session is best for you and return it to the school office **by Thursday 17<sup>th</sup> March**. Parents/carers must report to the Nursery office to sign in prior to attending the session. For any further enquiries, please contact the school office or your child's key worker.

[Nursery & Pre-School Stay & Play Letter](#)

### Performing Arts Concert Monday 28<sup>th</sup> March



The children have been practising for our Performing Arts Concert on Monday 28<sup>th</sup> March. For more information, please see the flyer at the bottom of the newsletter.

We look forward to welcoming you to the performance!

### Joseph Performance Tuesday 29<sup>th</sup>, Wednesday 30<sup>th</sup> & Thursday 31<sup>st</sup> March



Rehearsals for the junior production of "Joseph" are well underway and the children are eager to share with you, what they have learned.

The evening performances on Tuesday 29<sup>th</sup>, Wednesday 30<sup>th</sup> and Thursday 31<sup>st</sup> March will begin at 5.45pm (doors open at 5.30pm) and will last for just over one hour. Refreshments will be served in the courtyard area outside the hall before the performances commence.

Tickets are on sale and are at a maximum of 100 tickets per performance. There will be unreserved seating although parents or family members who have disability or health circumstances and require special seating consideration should let the office know when you order your tickets.

Tickets will be £2.50 for adults and £1.50 for children. Any tickets for Avalon children, past or present are free. There will be no limit to the number of tickets that people can purchase. You may, of course, purchase tickets for any of the performances. Payment options are detailed on the order form. The last date to purchase tickets will be Thursday 24<sup>th</sup> March.

[Joseph Performance Letter & Order Form](#)

### Reception to Year 2 Visit to Liverpool World Museum Thursday 31<sup>st</sup> March



Following our World Book Day theme of 'The Rainbow Fish', an educational visit to Liverpool World Museum has been booked for all children in Reception, Year 1 and Year 2 on Thursday 31<sup>st</sup> March 2022. We hope the visit to the Aquarium will enhance the children's learning about life under the sea.

The cost of the trip will be £6.00 which will include the cost of the coach and entry to the museum. The coach, (fitted with seatbelts), will set off from school at approximately 9:15am, please ensure your child arrives to school in plenty of time so we can organise ourselves for departure. The children will return to school in time for lunch.

School uniform must be worn, including blazers but not school hats. There will be no need for the children to bring any spending money.

In order to simplify the arrangements of trips, we will allocate a place for your child and the cost of £6.00, will be added to your summer term invoice. To enable your child to attend the trip to the museum it is important that the consent form below is completed and returned to the school office no later than Monday 28<sup>th</sup> March 2022.

[Liverpool World Museum Trip Letter](#)

### Spring Break Monday 4<sup>th</sup> to Tuesday 19<sup>th</sup> April



We will be closing for our Easter Break on Friday 1<sup>st</sup> April at the usual time and reopening to the children on Wednesday 20<sup>th</sup> April at the usual time. We hope you have a relaxing and enjoyable Easter break with lots of chocolate.



**Please note Before and After School care provision will be available as usual, see note below for further information about our wraparound facility.**

### Year 6 Residential – Tattenhall Centre Tuesday 3<sup>rd</sup> to Friday 6<sup>th</sup> May

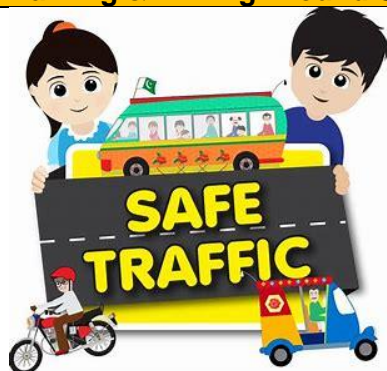


We have reserved places for a Year 6 residential to the Tattenhall Centre in Cheshire in May 2022. As you will no doubt be aware, we have not been able to run residentials for the previous two years and although the current guidance is for trips to be able to run, if there is any change in guidance in the upcoming weeks then we may need to review our preparations.

All the staff at the centre are suitably qualified to instruct the various activities and all specialist equipment is provided by the centre. The total cost of the visit will be £330 and this will include the cost of all travel, meals, insurances, accommodation, all activities and the use of the facilities. We would like all children to attend the residential as we believe it forms an important part of their social development and will also develop skills in numerous areas including Outdoor Adventurous Activities, which is part of the P.E. curriculum.

We ask that a deposit of £110 is payable to the school office by **Monday 28<sup>th</sup> February 2022** and that the balance of £220 is paid either in full by **25<sup>th</sup> April 2022** or instalments of:

Monday 28 February £110 Deposit  
Monday 28 March £110

[Year 6 Residential Trip Letter](#)**Parking & Driving Around School**

To help keep all members of our school community and our wider community safe please remember not to park on the zig-zag lines outside school when dropping off or picking up children and to aid visibility please avoid parking on the road directly outside school. We would also ask any parents using Warwick Drive to be extra careful and aware of pedestrians using this route to access school.

It would also be much appreciated if parents consider the through traffic along Caldy Road and avoid attempting U-turns in the road. These sorts of manoeuvres in the road can be particularly dangerous for all road users and pedestrians during these busy times of day. Please be mindful when parking and avoid parking across residents driveways.

We thank you for your continued support and understanding as we all adapt to different routines.

**Spring Term  
Extra-Curricular Clubs**

Extra-curricular clubs are as follows:

**Lower School Clubs (Reception to Year 2)**

Day	Club	Time	Year Group
Monday	Ballet	3.05pm to 3.35pm	Rec – Y2
	Football	3.05pm to 3.35pm	Rec – Y2
Wednesday	Construction Club	3.05pm to 3.35pm	Rec – Y2
Thursday	Dance	3.05pm to 3.35pm	Rec – Y2
Friday	Drama	12.35pm to 1pm	Y1 & Y2

**Upper School Clubs (Year 3 to Year 6)**

Day	Club	Time	Year Group
Monday	Football	3.40pm to 4.30pm	Y4 - Y6
	Tinkercard	12pm to 12.30pm	Y6
Tuesday	STEAM	3.40pm to 4.30pm	Y3 - Y6
	Verbal Reasoning	3.40pm to 4.30pm	Y5
Wednesday	Joseph Performance	3.40pm to 4.30pm	Y6
Thursday	Netball	3.40pm to 4.30pm	Y4 - Y6
	Oliver!	3.40pm to 4.30pm	Y5 & Y6
Friday	Drama	10.20am to 10.45am	Y3 & Y4
	Drama	12pm to 12.35pm	Y5 & Y6



	Chess	3.30pm to 4.30pm	Y3 to Y6
--	-------	------------------	----------

To sign up for:

Ballet and Jazz Dance click on this link [Ballet and Jazz Dance Sign Up](#)

Football click on this link [Football Sign Up](#)

Drama Club click on this link [Speech & Drama Sign Up](#)

For all other clubs this is done via Google forms, please click on the links below:

[Key Stage 1 Sign Up Form](#) (Reception to Year 2)

[Key Stage 2 Sign Up Form](#) (Year 3 to Year 6)

### IMPORTANT REMINDER

#### Breaktime Snack



We have a number of children in Avalon School with severe allergies. It is vitally important to ensure the health and safety of all the children that only fruit, and vegetables are brought into school for break time snacks.

We have also noticed recently that children are bringing in break time snacks to school which are high in salt, sugar and fat such as salted popcorn, crisps, and other sugary snacks. These snacks are not appropriate to brought into school.

### Arriving Late to School



For safeguarding purposes, can we please remind parents that if your child is going to be late for school, that you bring your child to the school office so we can ensure that your child has been signed in.

### Start of the Day Arrangements



Before school club is from 7.45am to 8.30am. Children attending before school club should enter the hall via the main school glass entrance doors.

From 8.30am to 8.50am parents may drop children off at the school gate which will be manned by Avalon staff. Alternatively parents and carers who may wish to bring their child onto the school site and drop their child off at the allocated entrance doors.

For reception, Year 1 and Year 2, this will be at the main glass entrance doors. For all Junior children, Year 3 to Year 6, this will be at the front door of the junior building.

Late attendance (after 8.50am). If your child is late coming into school, we then ask that parents ring the intercom for assistance and bring their child directly into the school office for registrations.

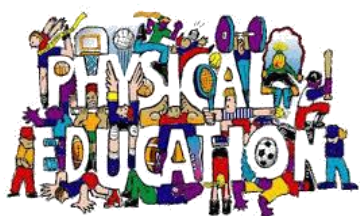
### End of the School Day



Children's collection arrangements will be similar to pre-COVID and are detailed below as follows:

Collection Time	Class	Where to collect your child
At the end of nursery or pre-school session or nursery wraparound	Nursery & Pre School	Main nursery entrance doors
3.05pm	Reception	Nursery entrance doors
3.05pm	Year 1	Main school glass entrance doors
3.05pm	Year 2	Nursery entrance doors
3.40pm	Year 3	Junior building front door
3.40pm	Year 4	Junior building front door
3.40pm	Year 5	Main school glass entrance
3.40pm	Year 6	Main school glass entrance

## PE Days



Below are the days that the children will be having their PE Lessons. Children should come into school dressed in their full PE kit on their designated PE days. Please could we also request that children have their School Blazer or Waterproof Coat with them, particularly as the weather will soon be turning much cooler. Hats and Caps will not be required on designed PE kit days

Year Group	Days
Reception	Friday
Year 1	Monday
Year 2	Friday
Year 3	Tuesday
Year 4	Wednesday
Year 5	Thursday
Year 6	Friday

## Pre-Loved Uniform



Thank you all for your continued support of Pre-Loved Uniform. We are now in a position to take donations. Please note we no longer accept the P.E uniform.

If you can ensure the donations are clean and in good condition and wearable. Please leave donations with the school office.

If you do need any uniform, please email [uniformpta@gmail.com](mailto:uniformpta@gmail.com) with any queries you may have. We have lots of items in stock.

Thanks again.  
Pre-Loved ♥

## Uniform Supplier

**UNIFORMITY** Schoolwear

Uniform can be purchased from Uniformity Clothing using the link below:

<http://www.uniformityschools.com/>

Click on the following link for a list of required uniform items:  
[Uniform List - Nursery to Year 6](#)

### Scam Emails Warning



We have been made aware by the Independent Schools Council of recent email scams involving people posing as prospective parents to try to gain access to school details including logo's, email templates etc. This information is then fraudulently used to scam parents into making payments into their accounts. If you do receive an email of this nature or if you are unsure about an email, we would be most grateful if you could contact the school immediately.

Please be assured that our own bank account details have not and will not, for the foreseeable future, change. Avalon School does not send out emails regarding unsolicited discount rates. Any emails you receive containing invoices or statements will be sent from either [accounts@avalon-school.co.uk](mailto:accounts@avalon-school.co.uk) or [annevans@avalon-school.co.uk](mailto:annevans@avalon-school.co.uk)

### Term Dates 2021-2022 & 2022-2023



#### Academic Year 2021-2022

**We would like to draw your attention to an additional staff training day on Friday 27<sup>th</sup> May 2022. As you are probably aware we usually have two staff training days at the start of the academic year, however we had one training day this September and therefore we have booked the reserved training day on Friday 27<sup>th</sup> May 2022.**

Autumn Term 2021	
Staff Training Days	Wednesday 1 <sup>st</sup> September 2021
Term Starts	Thursday 2 <sup>nd</sup> September 2021
Half-Term	<b>Monday 18<sup>th</sup> October to Friday 29<sup>th</sup> October 2021</b>
Ends	Tuesday 14 <sup>th</sup> December 2021 – 12:30pm Finish
Spring Term 2022	
Staff Training Day	Tuesday 4 <sup>th</sup> January 2022
Term Starts	Wednesday 5 <sup>th</sup> January 2022
Half-Term	<b>Monday 21<sup>st</sup> February to Friday 25<sup>th</sup> February 2022</b>
Ends	Friday 1 <sup>st</sup> April 2022 – Normal Finish Time
Summer Term 2022	
Staff Training Day	Tuesday 19 <sup>th</sup> April 2022
Term Starts	Wednesday 20 <sup>th</sup> April 2022
May Day	<b>Monday 2<sup>nd</sup> May 2022</b>
Staff Training Day	Friday 27 <sup>th</sup> May 2022
Half-Term	<b>Monday 30<sup>th</sup> May to</b>

	<b>Friday 3<sup>rd</sup> June 2022</b>
Ends	Wednesday 13 <sup>th</sup> July 2022 – Normal Finish Time

### Academic Year 2022-2023

Autumn Term	
Staff Training Days	Thursday 1 <sup>st</sup> & Friday 2 <sup>nd</sup> September 2022
Term Starts	Monday 5 <sup>th</sup> September 2022
<b>Half-Term</b>	<b>Monday 17<sup>th</sup> October to Friday 28<sup>th</sup> October 2022</b>
Ends	Tuesday 13 <sup>th</sup> December 2022 – 12 noon Finish
Spring Term	
Staff Training Day	Wednesday 4 <sup>th</sup> January 2023
Term Starts	Thursday 5 <sup>th</sup> January 2023
<b>Half-Term</b>	<b>Monday 20<sup>th</sup> February to Friday 24<sup>th</sup> February 2023</b>
Ends	Friday 31 <sup>st</sup> March 2023 – Normal Finish Time
Summer Term	
Staff Training Day	Monday 17 <sup>th</sup> April 2023
Term Starts	Tuesday 18 <sup>th</sup> April 2023
<b>May Day</b>	<b>Monday 1<sup>st</sup> May 2023</b>
<b>Half-Term</b>	<b>Monday 29<sup>th</sup> May to Friday 2<sup>nd</sup> June 2023</b>
Ends	Wednesday 12 <sup>th</sup> July 2023 – Normal Finish Time



### DATES FOR YOUR DIARY

#### MARCH 2022

Monday 14 <sup>th</sup>	Pre-School Parents Consultation Meetings – Julie Bache
Tuesday 15 <sup>th</sup>	Reception Stay & Play Session Pre-School Parents Consultation Meetings – Jo Rice
Wednesday 16 <sup>th</sup>	Year 3 Cookery Lesson Reception Stay & Play Session Nursery Parents Consultation Meetings – Jackie Duffy & Lucy Hunt
Thursday 17 <sup>th</sup>	Reception Stay & Play Session Nursery Parents Consultation Meetings – Mandy Elliott

Friday 18 <sup>th</sup>	Red Nose Day
Monday 21 <sup>st</sup>	Tam O'Shanter Farm Vegetable Donation Drop Year 6 Parents Consultation Meetings – Mrs Kililiku & Mrs Ashton
Tuesday 22 <sup>nd</sup>	School Council Visit to Tam O'Shanter Farm Nursery & Pre-School Stay & Play Session Reception Parents Consultation Meetings – Miss Hardy Year 1 Parents Consultation Meetings – Mrs Parkins Year 2 Parents Consultation Meetings – Mrs Roberts Year 3 Parents Consultation Meetings – Mrs Creedon Year 4 Parents Consultation Meetings – Miss Robertson Year 5 Parents Consultation Meetings – Mr Ashton & Mrs Kililiku
Wednesday 23 <sup>rd</sup>	Year 3 Cookery Lesson Nursery & Pre-School Stay & Play Session Reception Parents Consultation Meetings – Miss Hardy Year 1 Parents Consultation Meetings – Mrs Parkins Year 2 Parents Consultation Meetings – Mrs Roberts Year 3 Parents Consultation Meetings – Mrs Creedon Year 4 Parents Consultation Meetings – Miss Robertson Year 5 Parents Consultation Meetings – Mr Ashton & Mrs Kililiku
Thursday 24 <sup>th</sup>	Nursery & Pre-School Stay & Play Session Year 6 Parents Consultation Meetings – Mrs Kililiku & Mrs Ashton
Monday 28 <sup>th</sup>	Performing Arts Concert 2pm in the School Hall
Tuesday 29 <sup>th</sup>	Joseph & His Amazing Technicolour Dreamcoat Performance
Wednesday 30 <sup>th</sup>	Joseph & His Amazing Technicolour Dreamcoat Performance
Thursday 31 <sup>st</sup>	Reception to Year 2 Trip to Liverpool World Museum Joseph & His Amazing Technicolour Dreamcoat Performance

#### APRIL 2022

Friday 1 <sup>st</sup>	School Closes for Spring Easter at the usual time Wraparound Care and After School Care open until 6pm
Tuesday 19 <sup>th</sup>	Staff INSET Day
Wednesday 20 <sup>th</sup>	Children Return to School at the normal time

#### MAY 2022

Monday 2 <sup>nd</sup>	May Day Bank Holiday – School Closed
Tuesday 3 <sup>rd</sup> to Friday 9 <sup>th</sup>	Year 6 Residential Trip to Tattenhall Centre



**Should you have any concerns or suggestions,  
please do not hesitate to contact us:**

Avalon School, Caldý Road, West Kirby, CH48 2HE  
Tel: 0151 625 6993

Email: [schooloffice@avalon-school.co.uk](mailto:schooloffice@avalon-school.co.uk)

Headteacher: Mrs J Callaway [jcallaway@avalon-school.co.uk](mailto:jcallaway@avalon-school.co.uk)



## Wellbeing Quote of the Week

**Believe in yourself and  
you will be unstoppable!**

*You are cordially invited to our*

### ***Performing Arts Spring Concert***

*to be held in the School Hall on  
Monday 28th March at 2pm*

*All children from  
Reception to Year 6 will be  
involved.*

*Please come along to  
enjoy an entertaining  
afternoon of songs,  
poems, instrumentalists and  
performances.*



No need to book  
Come along and join in the fun!

Admission &  
Refreshments  
Only £3  
per child



# Avalon School Parent & Toddler Group



Wednesdays  
9.30am to 10.30am



Babies to 5 Years

Guest Session Leaders

Avalon School, Caldby Road, West Kirby, Wirral, CH48 2HE  
T: 0151 625 6993 / E: [schooloffice@avalon-school.co.uk](mailto:schooloffice@avalon-school.co.uk)  
[www.avalon-school.co.uk](http://www.avalon-school.co.uk)