

**Please click on the links below for further news and useful information**



Follow the link below for our school website home page:

[Avalon School Home Page](#)



Follow us on social media

Instagram: [@avalonschoolwestkirby](#)



Facebook: [AvalonSchoolWirral](#)



Follow the links below for all the latest news and our weekly newsletters

[Latest News](#)

[Weekly Newsletters](#)



Follow the links below for all key information including letters, term date etc:

[Letters & Documents](#)

[Term Dates](#)

[Other Key Information](#)



Follow the link below for all our calendar dates:

[Up and coming events - Calendar](#)



Follow the link below for information about our Before & After Care Provision:

[Before & After School Care](#)



Follow the link below for information on our PTA events:

[PTA News & Events](#)

## CELEBRATING ACHIEVEMENTS



**St Andrew**



**St David**



**St George**



**St Patrick**

### House Points

**149**

**156**

**240**

**154**

### Total House Points for the Year To-Date

**3045**

**3212**

**3152**

**3134**

### Merit Badges

Reception

IM

Year 1

EN

Year 2

OQ

Year 3

AS

Year 4

AH

OM

Year 5

PT

Year 6

EH

### Achievement Certificates



Reception	FP
Year 1	IMCC
Year 2	XH
Year 3	HB
Year 4	ES
	CD
Year 5	OS
Year 6	SO

### Headteachers Awards



Year 1	RD
	WK
Year 3	WR

### Mathletics Pupil of the Week

Mathletics

Infants	JAJ
Lower Juniors (Y3-Y4)	HB
	OMCK
Upper Juniors (Y5-Y6)	EH

### Reading Star!



Reception	NP
Year 1	MW
Year 2	CN
	TR
Year 3	CH
Year 4	LGR
Year 5	SA
Year 6	RP

### Golden Table

Rec	RPS	Y1	JAJ	Y2	CN
Y3	DK	Y4	MW	Y5	NA

## NEWS, NOTICES & REMINDERS

### Spring Half Term Holiday Camp

Monday 16<sup>th</sup> February to Friday 20<sup>th</sup> February 2026



Once again, Avalon School, in partnership with Activity for All, will be hosting a Spring half term holiday camp at Avalon School, which will be open to children from Reception to Year 6 and children from the wider community. The camp will be run by staff from Activity for All.

The camp will run from **Monday 16<sup>th</sup> February to Friday 20<sup>th</sup> February.**

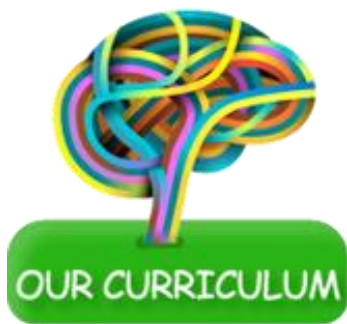


£20.00 per day from 9am – 3pm  
£27.50 per day with additional wrap-around from 8.30am – 5.30pm

To make a booking, please click on the link below:

<https://ecom.roller.app/activityforallwirral/holidaycamps/en/product/1132107?date=2026-02-16>

## Reception to Year 6 Curriculum Overviews



The Spring Term 2026 Curriculum Overviews have been emailed out to parents and carers this week. Please click on the links below for each individual year group. If you require a paper copy, please email or pop into the school office and a member of staff will be able to assist you.

[Reception Curriculum Overview Spring Term 2026](#)

[Year 1 Curriculum Overview Spring Term 2026](#)

[Year 2 Curriculum Overview Spring Term 2026](#)

[Year 3 Curriculum Overview Spring Term 2026](#)

[Year 4 Curriculum Overview Spring Term 2026](#)

[Year 5 Curriculum Overview Spring Term 2026](#)

[Year 6 Curriculum Overview Spring Term 2026](#)

## Reception Visit to Ashton Park Pond



The Reception children had a very successful trip to the Pond at Ashton Park yesterday. They walked along the Wirral Way which enabled them to observe lots of seasonal changes. Taking their clipboards and pencils, the children went hunting for animal tracks, birds, pine cones, bark and dead leaves whilst listening out for water dripping, ducks, geese and the wind!

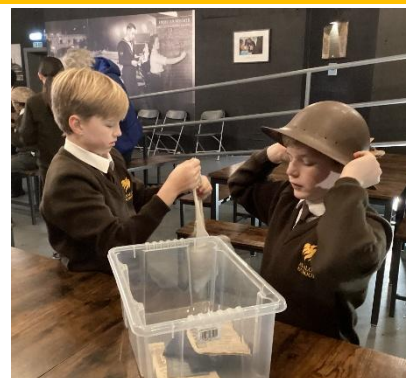


## Year 6 Trip to the Western Approaches Museum Liverpool

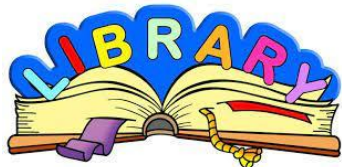


Year 6 had an incredible day stepping back in time at the Western Approaches Museum, Liverpool.

They explored the secret WWII underground bunker, learned about codebreaking and the Battle of the Atlantic, and discovered the vital role Liverpool played during the war. An unforgettable experience that truly brought history to life!



## Year 1 & Year 2 Visit to West Kirby Library Thursday 22<sup>nd</sup> January 2026



Year 1 & Year 2 will be hoping to walk to West Kirby Library on the morning of Thursday 22<sup>nd</sup> January 2026.

For more information, please click on the link below:  
[Year 1 & Year 2 Visit to West Kirby Library Letter](#)

## Save the Date! PTA Hop into Spring Event Saturday 21<sup>st</sup> March 2026 at Activity for All from 5.00pm to 7.30pm



The PTA will be holding a Family fun event at Activity 4All in Upton on Saturday 21<sup>st</sup> March 2026 from 5.00pm to 7.30pm. The event is open to all ages and to all members of Avalon School, and any friends or family that wish to come along.

More details to follow shortly.



## Lunch Menu

Lunch menu for the week commencing 19<sup>th</sup> January 2026



Click on the following link for our [Lunch Menus](#)

Favourite Meal of the Week	
Main	Pasta Bolognese
Pudding	Flapjack

## Year 6 World War II Afternoon Tea Tuesday 27<sup>th</sup> January 2026 at 3.45pm



The Year 6 children would like to invite parents and carers to a special World War II afternoon tea at 3.45pm. The afternoon will consist of refreshments, poetry, songs and speeches, all inspired by their World War II topic and we expect the event to last around 45 minutes.

For more information, please click on the link below:  
[Year 6 World War II Afternoon Tea Letter](#)

## Reception Audio and Visual Screening Thursday 29<sup>th</sup> January 2026 at 1pm

### Hearing and Vision Screening



Wirral Community Health Care will be carrying out audio and visual screening for the children in Reception on Thursday 29<sup>th</sup> January 2026 at school.

If you do not wish for your child to take part in the screening, please contact the team as soon as possible on 0151 514 0219 or [wchc.wirralhub@nhs.net](mailto:wchc.wirralhub@nhs.net) If they do not hear from parents, your child will participate in both the vision and hearing checks.

[vision screening parent leaflet Jun23.pdf](#)  
([publishing.service.gov.uk](http://publishing.service.gov.uk))

**For more information, please click on the link below:**  
[Reception Audio and Visual Screening Letter](#)

## PTA - Gift Amnesty



The PTA are looking for any duplicate/unwanted gifts you may have received which can be used for any future raffle prizes. If you can help, please drop off any gifts to the School Office.

We thank you for the contributions we have received so far this year and look forward to receiving more donations this year.



## Year 5 & Year 6 Bikability Course Level 1&2 Tuesday 10<sup>th</sup>, Wednesday 11<sup>th</sup> & Thursday 12<sup>th</sup> February 2026

Making cycling  
viable, safer  
and better



We are excited to be working with BikeRight to offer Year 5 and some of the Year 6 children who missed out last year, their Bikability Level 1 and Level 2 combined course commencing Tuesday 10<sup>th</sup> February 2026.

The children will be in groups of 5; completing both Level 1 and Level 2 on the same day, therefore they will only need to bring their bike into school for one day. Parents will be informed which day their child has been allocated once the booking process is complete.

**For more information, please click on the link below:**  
[BikeRight Letter](#)

**To book your slot with BikeRight, please click on the link below:**  
[Booking Link](#)

## Reception to Year 6 M&M Theatre Production – The Jungle Book Tuesday 24<sup>th</sup> February 2026



We have arranged for "M&M" Theatre in Education Company to present a performance of "The Jungle Book Show" at Avalon on Tuesday 24<sup>th</sup> February 2026 in the afternoon for the children in Reception to Year 6.

The cost of the performance will be £19.00 per child (inc. VAT).

To enable your child to attend the production, we would be grateful if you could make the necessary arrangements to pay the £19.00 no later than **Friday 13<sup>th</sup> February 2026**.

**For more information, please click on the link below:**  
[M&M Theatre Production Letter](#)

## Year 6 Residential to Petty Pool Tuesday 12<sup>th</sup> May to Thursday 14<sup>th</sup> May 2026



We have reserved places for a Year 6 residential to Petty Pool Outdoor Centre in Cheshire.

The aims of the residential will be:

- Learn new skills
- Gain an appreciation of the natural environment
- Undertake exciting activities
- Develop an awareness of the needs of others
- Meet personal challenges

The final cost of the trip is £265 (inclusive of VAT). This includes the cost of all travel, meals, insurances, accommodation, all activities and the use of the facilities. We would like all children to attend the residential as we believe it forms an important part of their social development and will also develop skills in numerous areas including Outdoor Adventurous Activities, which is part of the P.E. curriculum.

**For more information, please click on the link below:**

### Start of the Day Arrangements



Before school club is from 7.45am to 8.30am. Children attending before school club should enter the hall via the main school glass entrance doors.

From 8.30am to 8.45am parents may drop children off at the school gate which will be manned by Avalon staff. Alternatively parents and carers who may wish to bring their child onto the school site and drop their child off at the allocated entrance doors.

For Reception, Year 1 and Year 2, this will be at the main glass entrance doors. For all Junior children, Year 3 to Year 6, this will be at the front door of the junior building.

### Arriving Late to School



Late attendance (after 8.45am). If your child is late coming into school, we then ask that parents ring the intercom for assistance and bring their child directly into the school office for registrations.

### Extra-Curricular Clubs



Extra-curricular clubs are as follows:

#### LOWER SCHOOL CLUBS (Reception to Year 2)

Day	Club	Time	Year Group
Monday	Ballet	2.30pm to 3pm	Pre-School
	Ballet	3.05pm to 3.35pm	Rec - Y2
Tuesday	Multi-Sports	3.05pm to 3.35pm	Rec – Y2
Wednesday	Dance Fun Club	3.05pm to 3.35pm	Rec – Y2

	Jo Jingles	Lunchtime	Rec – Y2
Thursday	Football	3.05pm to 3.35pm	Rec – Y2

### UPPER SCHOOL CLUBS (Year 3 to Year 6)

**PLEASE NOTE THERE WILL BE NO RUNNING CLUB ON TUESDAY 27<sup>th</sup> JANUARY**

Day	Club	Time	Year Group
Monday	Acro Dance	3.40pm to 4.40pm	Y3 – Y6
	Lego Club	Lunchtime	Y5 – Y6
Tuesday	Running Club	3.40pm to 4.30pm	Y3 – Y6
	Film & Book Club	Lunchtime	Y5 – Y6
Wednesday	Computing	Lunchtime	Y3 – Y6
	Lego Club	3.40pm to 4.30pm	Y3 - Y4
	Joseph Rehearsals	3.40pm to 4.30pm	Y5 – Y6
Thursday	Verbal Reasoning	3.40pm to 4.30pm	Y5
	Hockey	3.40pm to 4.40pm	Y3 – Y6
Friday	Football	3.40pm to 4.30pm	Y3 – Y6

Acro Dance Sign up: [lou.rutter@yahoo.co.uk](mailto:lou.rutter@yahoo.co.uk)

Ballet Sign up: [lou.rutter@yahoo.co.uk](mailto:lou.rutter@yahoo.co.uk)

Jo Jingles Sign up: [louisejojingles@icloud.com](mailto:louisejojingles@icloud.com)

Reception to Year 2 **Multi-Sports** and **Football**

Year 3 to Year 6 **Hockey**

Visit **Activity for All** for booking and payment

<https://ecom.roller.app/activityforallwirral/arrowepark/en/product/1184426>

To book all other clubs, please use the link below:

[Booking Link](#)

**Please note that children attending sports clubs (including Acro Dance) should come to school wearing their school PE kit. For ballet the children should wear their ballet kit.**

### End of the Day Arrangements



Children's collection arrangements will be as follows:

Year Group	Collection Time	Collect From
Nursery & Pre-School	At the end of session	Nursery Entrance
Reception	3.05pm	Nursery Entrance
Year 1	3.05pm	Hall Door
Year 2	3.05pm	Hall Door
Year 3	3.40pm	Junior House Front Door
Year 4	3.40pm	Junior House Front Door

Year 5	3.40pm	Main School Glass Entrance
Year 6	3.40pm	Main School Glass Entrance

## PE Days



Below are the days that the children will be having their PE Lessons. Children should come into school dressed in their full PE kit on their designated PE days. Please could we also request that children have their School Blazer or Waterproof Coat with them, particularly as the weather will soon be turning much cooler. Hats and Caps will not be required on designed PE kit days

Year Group	PE Day
Reception	Wednesday
Year 1	Friday
Year 2	Friday
Year 3	Tuesday Thursday
Year 4	Tuesday Thursday
Year 5	Wednesday
Year 6	Wednesday

## IMPORTANT REMINDER Breaktime Snacks



We have a number of children in Avalon School with severe allergies. It is vitally important to ensure the health and safety of all the children that only fruit, and vegetables are brought into school for break time snacks.

Snack which are high in salt, sugar and fat such as salted popcorn, crisps, and other sugary snacks are not appropriate to be brought into school.

Thank you for your co-operation.

## Recycle Your Empty Printer at School



As part of a recycling initiative, we are asking all parents and carers if they would kindly drop off any used Inkjet and toner cartridges to the blue Inkjet recycling box situated outside the school office.

Inkjet and toner cartridges can take up to 1,000 years to compose, so if we can help recycle them, and raise some money for the school at the same time, this is a win-win situation!



## Safeguarding

# Keeping Children Safe



To ensure the safety and wellbeing of all our pupils, we kindly remind you that parents and carers should only enter the school buildings when **with a member of staff or you have shared a valid Enhanced DBS check with the school.**

This is a vital part of our safeguarding procedures and helps us maintain a secure environment for everyone.

Thank you for your cooperation and understanding.

## Safety Reminder!



We kindly remind parents that children should not play on the playground area, outside of school hours, unless closely supervised by an adult. Whilst we strive to ensure everyone's safety during school hours, we cannot be held liable for your children's safety once they have been collected and are in parents' care.

Thank you for your understanding and cooperation.

## Supporting Families Together: Wirral's Family Toolbox



At Avalon School and Nursery, we understand that parenting can be both rewarding and challenging. That's why we're proud to work in partnership with **Wirral's Family Toolbox** – a free online resource designed to support families in finding the right help, at the right time.

**Family Toolbox** is a space where you can explore practical advice, local services, and useful tools to help your family thrive. Whether you're looking for tips on routines, managing behaviour, mental health support, or advice on housing and finances, Family Toolbox connects you to trusted information and services – all in one place.

By accessing Family Toolbox early, families can often find solutions before challenges become more complex. This enables **early help**, which we at Avalon, strongly support, working alongside you to build a team around your child when needed.

To explore what's available and find support that works for you, visit:

👉 [www.familytoolbox.co.uk](http://www.familytoolbox.co.uk)

Together, we can help make sure every child has the best possible start.

## Mental Well Being Support



Below are some helpful links to websites and services that can be accessed in relation to mental well being support. We have a number of trained Mental Health First aiders in school, but as always, please do get in touch if there is anything further that you would like School to do to support a child, parent or family further.

[Home - Kooth](#)

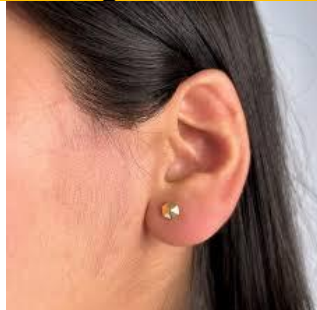
[Shout: The UK's free, confidential, 24/7 mental health text service | Shout 85258](#)

**MyMind Crisis Line Wirral Services - 0800 145 6485 or if you or a young person is at immediate risk and needs urgent help with their**

mental health, please call the 24/7 urgent mental health crisis line by calling NHS 111 and selecting the mental health option.

[Mental health | Wirral InfoBank](#) - Wirral directory with information about different services.

### Earrings in School



It has come to our attention that there are a number of children wearing earrings in school. Our uniform policy states that for health and safety reasons no jewellery with the exception of a watch may be worn in school.

Therefore, we would be grateful if you could remind children to remove earrings and any other jewellery before coming to school.

We understand that a number of children have only recently had their ears pierced and although it is not ideal, in this instance could we ask parents/carers to ensure that earrings are covered each morning with plasters.

Once the 6-week healing process is complete the earrings should be removed and not worn during school time.

### Healthy Snacks



We know that many parents like to celebrate birthdays and other occasions with special treats. We encourage parents to celebrate with non-food items such as stickers, pencils, themed erasers, or other trinkets, rather than food.

Thank you for your understanding and co-operation.

### Wet Play Bags



As we start a new academic year, if any children need a new wet bag play, please contact the school office via email [schooloffice@avalon-school.co.uk](mailto:schooloffice@avalon-school.co.uk). New wet play bags are charged at £5.00 each.

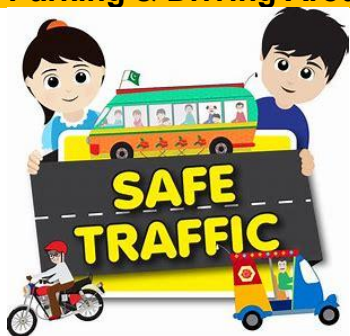
All children in Reception and new children throughout the main school will be provided with a wet play bag and instructions as to what can be included.

### Avalon School Water Bottles



Should any children need a new Avalon School water bottle, please contact the school office via email [schooloffice@avalon-school.co.uk](mailto:schooloffice@avalon-school.co.uk). New water bottles are charged at £2.75 each.

## Parking & Driving Around School



To help keep all members of our school community and our wider community safe please remember not to park on the zig-zag lines outside school when dropping off or picking up children and to aid visibility please avoid parking on the road directly outside school. We would also ask any parents using Warwick Drive to be extra careful and aware of pedestrians using this route to access school.

It would also be much appreciated if parents consider the through traffic along Caldry Road and avoid attempting U-turns in the road. These sorts of manoeuvres in the road can be particularly dangerous for all road users and pedestrians during these busy times of day.

We thank you for your continued support and understanding as we all adapt to different routines.

## Scooters and Bicycles



We now have four bicycle and scooter racks which are positioned underneath the school office window, available for use by the children.

Please note that bicycles or scooters are left at owner's risk. Unfortunately, school cannot take any responsibility for loss or damage.

## MyNameTags.com



Help fund raise for Abalon School by buying your child's uniform labels from MyNameTags.

Go to [www.MyNameTags.com](http://www.MyNameTags.com)

Use the Avalon School unique ID 114883

For every purchase Avalon School will receive 24% commission

## Uniform Supplier

UNIFORMITY Schoolwear

Uniform can be purchased from Uniformity Clothing using the link below:  
<http://www.uniformityschools.com/>

## Pre-Loved Uniform



If you have any requests for uniform please email on [uniformpta@gmail.com](mailto:uniformpta@gmail.com) Whilst we are now in a position to accept donations, please can you make sure that all items donated are wearable and not threadbare, and clean. Also, we can **only** accept the following Avalon specific uniform:

- Blazers/Black Raincoats
- Caps/Hats/Boaters
- Brown V Neck Jumpers/Cardigans
- Brown PE Sweatshirts/Joggers
- Tunics/Summer Dresses

Please leave with the School Office. Thank you.

## Scam Emails Warning



We have been made aware by the Independent Schools Council of recent email scams involving people posing as prospective parents to try to gain access to school details including logo's, email templates etc. This information is then fraudulently used to scam parents into making payments into their accounts. If you do receive an email of this nature or if you are unsure about an email, we would be most grateful if you could contact the school immediately.

Please be assured that our own bank account details have not and will not, for the foreseeable future, change. Avalon School does not send out emails regarding unsolicited discount rates. Any emails you receive containing invoices or statements will be sent from either [accounts@avalon-school.co.uk](mailto:accounts@avalon-school.co.uk) or [annevans@avalon-school.co.uk](mailto:annevans@avalon-school.co.uk)

## Term Date 2025-2026



### 2025-2026

Spring Term	
Staff Training Day	Monday 5 <sup>th</sup> January 2026
Term Starts	Tuesday 6 <sup>th</sup> January 2026
<b>Half-Term</b>	<b>Monday 16<sup>th</sup> February to Friday 20<sup>th</sup> February 2026</b>
Ends	Friday 27 <sup>th</sup> March 2026 Normal finish time
Summer Term	
Staff Training Day	Monday 13 <sup>th</sup> April 2026
Term Starts	Tuesday 14 <sup>th</sup> April 2026
<b>May Day</b>	<b>Monday 4<sup>th</sup> May 2026</b>
<b>Half-Term</b>	<b>Monday 25<sup>th</sup> May to Friday 29<sup>th</sup> May 2026</b>
Ends	Friday 10 <sup>th</sup> July 2026 Normal finish time

**2026/2027 Term Dates are available on the Website**  
[Term Dates](#)

**Should you have any concerns or suggestions,  
please do not hesitate to contact us:**

Avalon School, Caldly Road, West Kirby, CH48 2HE  
Tel: 0151 625 6993

Email: [schooloffice@avalon-school.co.uk](mailto:schooloffice@avalon-school.co.uk)

Headteacher: Mrs J Callaway [jcallaway@avalon-school.co.uk](mailto:jcallaway@avalon-school.co.uk)





## JANUARY

Thursday 15 <sup>th</sup>	Reception Visit to Ashton Park Pond
Friday 16 <sup>th</sup>	Year 6 Trip to Western Approaches Museum
Thursday 22 <sup>nd</sup>	Year 1 & Year 2 Visit to West Kirby Library
Tuesday 27 <sup>th</sup>	Year 6 World War II Afternoon Tea
Thursday 29 <sup>th</sup>	Reception Audio & Visual Screening

## February

Friday 6 <sup>th</sup>	Time to Talk NSPCC Day
Tuesday 10 <sup>th</sup>	Year 5 & Year 6 Bikeability Course Safer Internet Day
Wednesday 11 <sup>th</sup>	Year 5 & Year 6 Bikeability Course
Thursday 12 <sup>th</sup>	Year 5 & Year 6 Bikeability Course
Monday 16 <sup>th</sup> February to Friday 20 <sup>th</sup> February 2026	Spring Half Term Holiday
Monday 16 <sup>th</sup> February to Friday 20 <sup>th</sup> February 2026	Spring Half Term holiday camp at Avalon school run by Activity for All
Monday 23 <sup>rd</sup>	Children return to school
Tuesday 24 <sup>th</sup>	Reception to Year 6 M&M Theatre Production – The Jungle Book Story

## March

Thursday 5 <sup>th</sup>	World Book Day (House Event)
Wednesday 18 <sup>th</sup>	Global Recycling Day
Friday 20 <sup>th</sup>	Red Nose Day
Saturday 21 <sup>st</sup>	PTA Hop into Spring Event at Activity for All Upton
Monday 23 <sup>rd</sup>	Parents Evening Meetings
Tuesday 24 <sup>th</sup>	Parents Evening Meetings
Thursday 26 <sup>th</sup>	Parents Evening Meetings

## May

Tuesday 12 <sup>th</sup> May to Thursday 14 <sup>th</sup> May	Year 6 Residential to Petty Pool
------------------------------------------------------------------	----------------------------------

# **Avalon School**

## **Baby & Toddler Group**

(0-5 years)

**Wednesday mornings (term time)**  
**9.30am to 11.00am**  
**ALL WELCOME!**



**£5 a child / £2 for a sibling**  
**(cash or card payments)**

**Refreshments included**

**Lots of fun activities**

**No need to book**  
**Come along and**  
**join in the fun!**

**Avalon School, Caldby Road, West Kirby, Wirral, CH48 2HE**  
**T: 0151 625 6993 / E: [schooloffice@avalon-school.co.uk](mailto:schooloffice@avalon-school.co.uk)**  
**[www.avalon-school.co.uk](http://www.avalon-school.co.uk)**

Want to help our PTA raise money  
that will benefit your child?



Turn your everyday shopping into PTA funds with  
**Easyfundraising**

You shop, brands donate to our PTA and  
the best bit is it won't cost you anything extra!



Help us make a difference when you shop.

Visit: [www.easyfundraising.org.uk](http://www.easyfundraising.org.uk)

Download the app.



Visit [www.easyfundraising.org.uk](http://www.easyfundraising.org.uk)

Sign up and search for **Avalon School PTA, Wirral**

Your favourite brands donate to our PTA whenever  
you shop with them

SHOP WITH 8,000+ BRANDS INCLUDING:

Booking.com

ebay

M&S

GROUPON

Argos

TUI

JOHN  
LEWIS



Viking

ASOS



Uber Eats